

- EXISTING LIFT STATION
- FORCEMAIN OPTION 1
- FORCEMAIN OPTION 2
- PROP. LIFT STATION
- PROP. SERVICE AREA

**WELLS COUNTY SANITARY SEWER PER
WELLS COUNTY, INDIANA
REIFFSBURG SERVICE AREA**

REVISIONS:

FILE NAME
REIFFSBURAREA

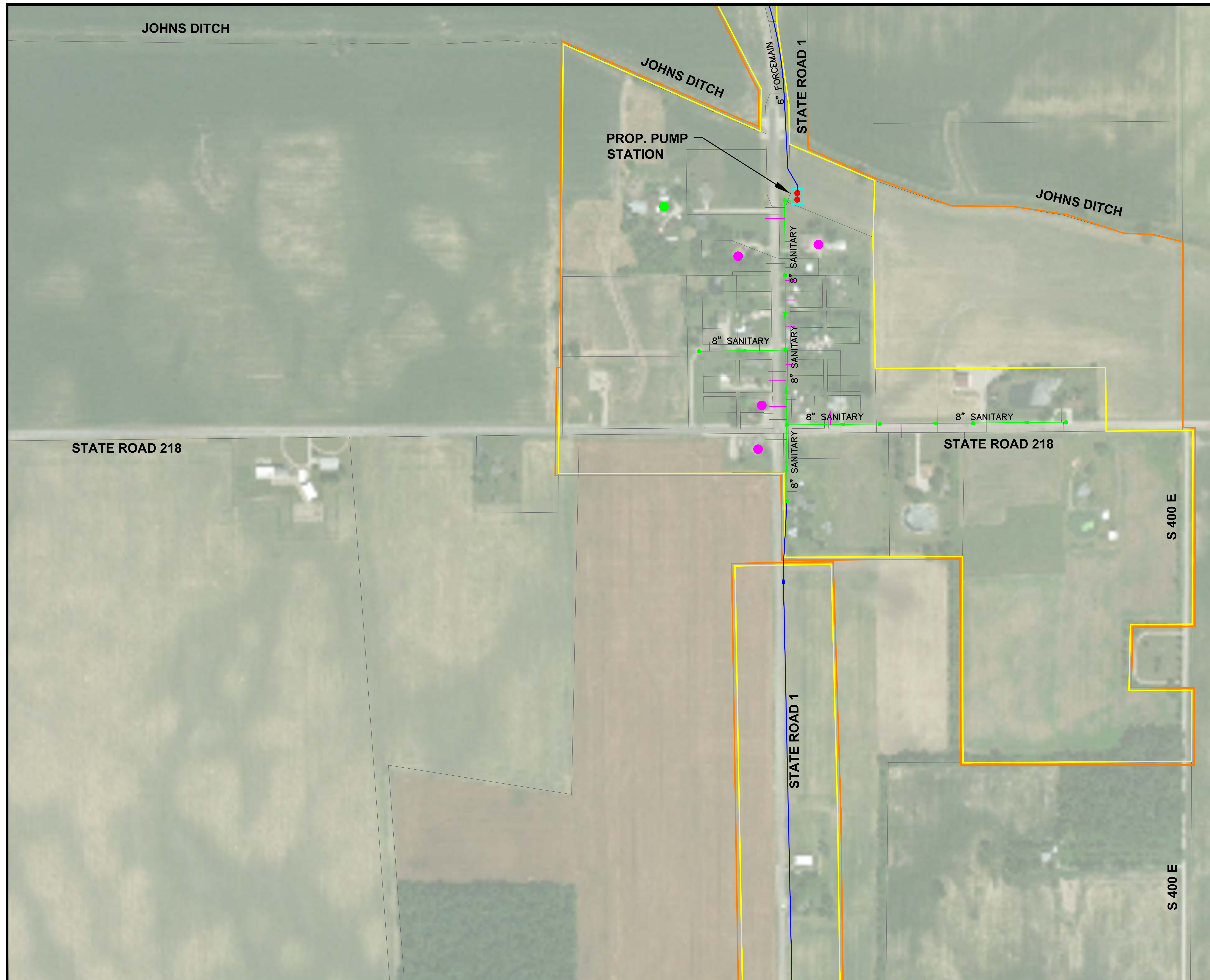
DRAWN BY
R.JL

CHECKED BY
R.JL

PROJECT No.
INWELLAN2001

DATE
02/01/2020

SHEET NUMBER



SCALE IN FEET
0 100 200 400

- - - - - EXISTING SANITARY SEWER
 EXISTING LIFT STATION
 SERVICE AREA BOUNDARY
 20-YR SERVICE AREA BOUNDARY
 PROP. SANITARY SEWER (OPEN CUT INSTALLATION)
 PROP. SANITARY LATERAL (OPEN CUT INSTALLATION)
 PROP. LIFT STATION
 FUTURE SANITARY SEWER
 UNDISTURBED AREAS
 FEMA 100-YEAR FLOODPLAIN LIMITS
 GP PROP. GRINDER STATION (TIE INTO FORCEMAIN) (DIRECTIONAL BORE)

- REIFFSBURG SERVICE AREA SUMMARY
- 69 Ex. RESIDENTIAL HOUSES
 - 0 CHURCHES
 - 0 COMMERCIAL BUSINESSES
 - 0 INDUSTRIAL BUSINESSES
 - 2 FUTURE RESIDENTIAL HOUSES

Choice One
 Engineering

SIDNEY, OHIO 937.497.0200
 LOVELAND, OHIO 513.239.8554
 WWW.CHOICEONEENGINEERING.COM

WELLS COUNTY SANITARY SEWER PER
WELLS COUNTY, INDIANA
EXHIBIT 1A: REIFFSBURG AREA (OPTION 3)

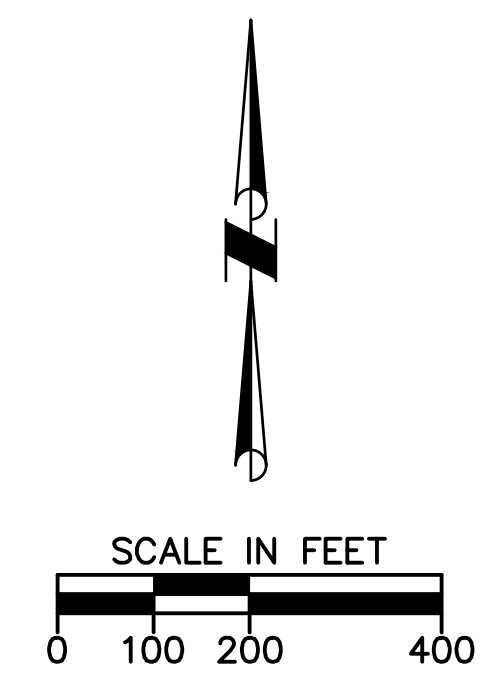
REVISIONS:

FILE NAME	REIFFSBURGAREA-A
DRAWN BY	RJL
CHECKED BY	RJL
PROJECT No.	INWELLAN2001
DATE	02/01/2020
SHEET NUMBER	4 OF 18



1) Distribution Airbus D

JOHNS DITCH



- EXISTING SANITARY SEWER
- EXISTING LIFT STATION
- SERVICE AREA BOUNDARY
- 20-YR SERVICE AREA BOUNDARY
- PROP. SANITARY SEWER (OPEN CUT INSTALLATION)
- PROP. SANITARY LATERAL (OPEN CUT INSTALLATION)
- PROP. LIFT STATION
- - - ● - - - FUTURE SANITARY SEWER
- UNDISTURBED AREAS
- FEMA 100-YEAR FLOODPLAIN LIMITS
- GP ● PROP. GRINDER STATION (TIE INTO FORCEMAIN) (DIRECTIONAL BORE)

- REIFFSBURG SERVICE AREA SUMMARY
- 69 Ex. RESIDENTIAL HOUSES
 - 0 CHURCHES
 - 0 COMMERCIAL BUSINESSES
 - 0 INDUSTRIAL BUSINESSES
 - 2 FUTURE RESIDENTIAL HOUSES

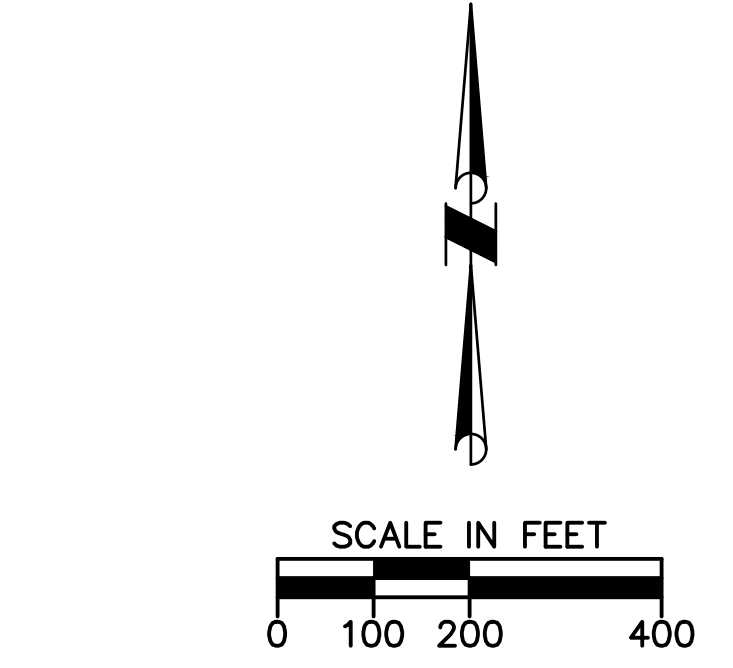


SIDNEY, OHIO 937.497.0200
 LOVELAND, OHIO 513.239.8554
 WWW.CHOICEONEENGINEERING.COM

**WELLS COUNTY SANITARY SEWER PER
 WELLS COUNTY, INDIANA
 EXHIBIT 1B: REIFFSBURG AREA (OPTION 3)**

REVISIONS:

FILE NAME	REIFFSBURGAREA-A
DRAWN BY	RJL
CHECKED BY	RJL
PROJECT No.	INWELLAN2001
DATE	02/01/2020
SHEET NUMBER	



- EXISTING SANITARY SEWER
- EXISTING LIFT STATION
- SERVICE AREA BOUNDARY
- 20-YR SERVICE AREA BOUNDARY
- PROP. SANITARY SEWER (OPEN CUT INSTALLATION)
- PROP. SANITARY LATERAL (OPEN CUT INSTALLATION)
- PROP. LIFT STATION
- - - ● - - - FUTURE SANITARY SEWER
- UNDISTURBED AREAS
- FEMA 100-YEAR FLOODPLAIN LIMITS
- GP ● PROP. GRINDER STATION (TIE INTO FORCEMAIN) (DIRECTIONAL BORE)

REIFFSBURG SERVICE AREA SUMMARY

- 69 Ex. RESIDENTIAL HOUSES
- 0 CHURCHES
- 0 COMMERCIAL BUSINESSES
- 0 INDUSTRIAL BUSINESSES
- 2 FUTURE RESIDENTIAL HOUSES

**WELLS COUNTY SANITARY SEWER PER
 WELLS COUNTY, INDIANA
 EXHIBIT 1C: REIFFSBURG AREA (OPTION 3)**

REVISIONS:

FILE NAME	REIFFSBURGAREA-A
DRAWN BY	RJL
CHECKED BY	RJL
PROJECT No.	INWELLAN2001
DATE	02/01/2020
SHEET NUMBER	